

# Rabbit Polyclonal Antibody to Zebrafish PDHA1

## Order Information

Catalog#	P34234	
Size/Concentration	100µl	50µl
Price(¥)	1980	1180

## Description

The pyruvate dehydrogenase (PDH) complex is a nuclear-encoded mitochondrial multienzyme complex that catalyzes the overall conversion of pyruvate to acetyl-CoA and CO(2), and provides the primary link between glycolysis and the tricarboxylic acid (TCA) cycle. The PDH complex is composed of multiple copies of three enzymatic components: pyruvate dehydrogenase (E1), dihydrolipoamide acetyltransferase (E2) and lipoamide dehydrogenase (E3). The E1 enzyme is a heterotetramer of two alpha and two beta subunits. This gene encodes the E1 alpha 1 subunit containing the E1 active site, and plays a key role in the function of the PDH complex. Mutations in this gene are associated with pyruvate dehydrogenase E1-alpha deficiency and X-linked Leigh syndrome.

## Specification

Aliases : PDHE1-A type I; Pyruvate dehydrogenase E1 component subunit alpha, somatic form, mitochondrial; PHE1A, PDHA1;pdha1a;pdha1b

Entrez GeneID : 406702

Swissprot : Q6P948

WB Predicted band size : 43.7kDa

Host/Isotype : Rabbit IgG

Storage : Store at 4°C short term. Aliquot and store at -20°C long term. Avoid freeze/thaw cycles.

Species Reactivity : zebrafish

Immunogen : This Zebrafish PDHA1 antibody is generated from rabbits immunized with a KLH conjugated synthetic peptide between 233~263 amino acids from the Central region of Zebrafish PDHA1.

Formulation : Purified polyclonal antibody supplied in PBS with 0.05% sodium azide. This antibody is purified through a protein A column, followed by peptide affinity purification.

## Application

WB	1/1000
----	--------

Call 1-510-860-4615  
+86-19375157864  
Email [Info@ProMab.com](mailto:Info@ProMab.com)  
Web [www.ProMab.com](http://www.ProMab.com)  
[www.ProMab.cn](http://www.ProMab.cn)

## Protocol

WB - [www.promab.com/protocol/wb.html](http://www.promab.com/protocol/wb.html)  
IHC - [www.promab.com/protocol/ihc.html](http://www.promab.com/protocol/ihc.html)  
ICC - [www.promab.com/protocol/icc.html](http://www.promab.com/protocol/icc.html)  
HCM - [www.promab.com/protocol/hcm.html](http://www.promab.com/protocol/hcm.html)

**Antigen Sequence** is available upon request.

## Products and Services

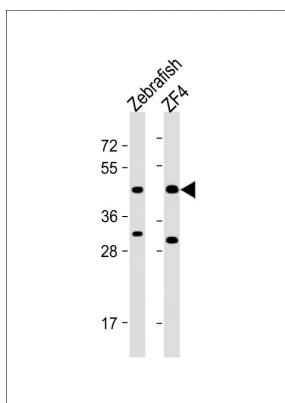
- Mouse Monoclonal Antibody
- Rat Monoclonal Antibody
- Human Antibody
- Hybridoma Sequencing
- Polyclonal Antibody

**For Research Only**

**Application Key:**WB - Western Blot | IHC - Immunohistochemistry | ICC - Immunocytochemistry | FCM - Flow Cytometry | ELISA - Enzyme-linked Immunosorbent Assay | IP - Immunoprecipitation

# #P34234

# Rabbit Polyclonal Antibody to Zebrafish PDHA1



All lanes : Anti-PDHA1 Antibody (Center) at  
1:1000 dilution Lane 1: Zebrafish lysate  
Lane 2: ZF4 whole cell lysate  
Lysates/proteins at 20  $\mu$ g per lane.  
Secondary Goat Anti-Rabbit IgG, (H+L),  
Peroxidase conjugated at 1/10000 dilution.  
Predicted band size : 44 kDa  
Blocking/Dilution buffer: 5% NFDM/TBST.

**For Research Only**

**Application Key:**WB - Western Blot | IHC - Immunohistochemistry | ICC - Immunocytochemistry | FCM -  
Flow Cytometry | ELISA - Enzyme-linked Immunosorbent Assay | IP - Immunoprecipitation

#P34234